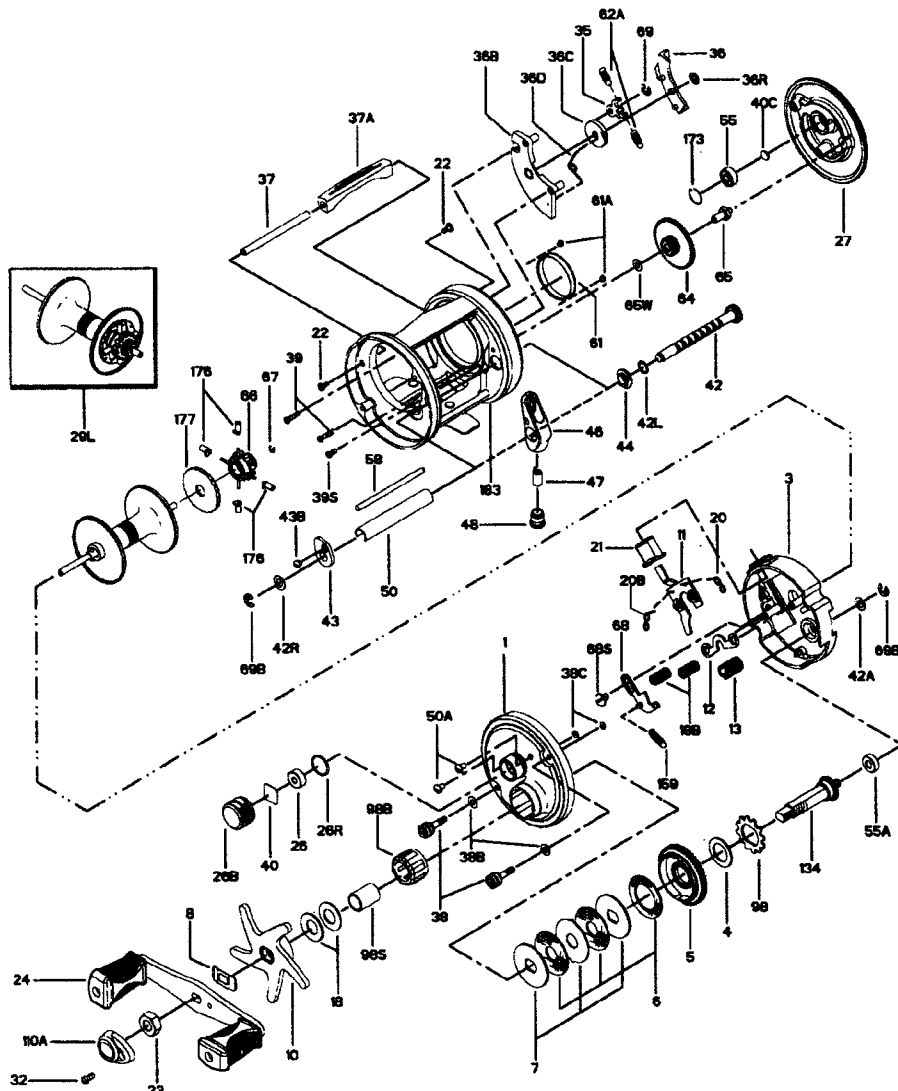




PARTS LIST FOR MODEL 955 AND 965



| KEY NO. | DESCRIPTION | MODEL 955 PART NO. | MODEL 965 PART NO. |
|---------|-------------------------------|--------------------|--------------------|
| 11 | Eccentric Jack | 11-965 | 11-965 |
| 12 | Yoke | 12-965 | 12-965 |
| 13 | Pinion | 13-965 | 13-965 |
| 18 | Disc Clutch Spring (2 req.) | 18-965 | 18-965 |
| 18B | Yoke Spring (2 req.) | 18B-965 | 18B-965 |
| 20 | R.S. Jack Spring | 20-965 | 20-965 |
| 20B | L.S. Jack Spring | 20B-965 | 20B-965 |
| 21 | Clutch Release Button | 21-965 | 21-965 |
| 22 | Post Screw (2 req.) | 50-716 | 50-716 |
| 23 | Handle Nut | 23-965 | 23-965 |
| 24 | Handle Assembly | 24-965 | 24-965 |
| 26 | R.S. Plate Bushing | 26-965 | 26-965 |
| 26B | Spool Tension Cap | 26B-965 | 26B-965 |
| 26R | Tension Cap 'O' Ring | 26R-965 | 26R-965 |
| 27 | Left Side Plate | 27-965 | 27-965 |
| 29L | Spool Assembly | 29L-955 | 29L-965 |
| 32 | Handle Cap Screw | 32-15 | 32-15 |
| 36 | Click Tongue | 36-965 | 36-965 |
| 36 | Click Button | 36-965 | 36-965 |
| 36B | Click Housing | 36B-965 | 36B-965 |
| 36C | Click Wheel | 36C-965 | 36C-965 |
| 36D | Click Wheel Spring | 36D-965 | 36D-965 |
| 36R | Retaining Flng | 36R-965 | 36R-965 |
| 37 | Thumb Bar Post | 37-965 | 37-965 |
| 37A | Thumb Bar | 37A-965 | 37A-965 |
| 38 | Take-Apart Screw (2 req.) | 38N-965 | 38N-965 |
| 38B | Side Plate Washer (2 req.) | 38BN-965 | 38BN-965 |
| 38C | Screw 'O' Ring (2 req.) | 38CN-965 | 38CN-965 |
| 39 | L.S. Plate Screw (2 req.) | 39-965 | 39-965 |
| 39B | L.S. Plate Short Screw | 39S-965 | 39S-965 |
| 40 | Metal Thrust Washer | 40C-965 | 40C-965 |
| 40C | Metal Thrust Washer | 40C-310 | 40C-310 |
| 42 | Worm Shaft | 42M-965 | 42M-965 |
| 42A | Metal Washer | 42R-965 | 42R-965 |
| 42L | L.S. Worm Shaft Washer | 42L-965 | 42L-965 |
| 42R | R.S. Worm Shaft Washer | 42R-965 | 42R-965 |
| 43 | R.S. Worm Shaft Bushing | 43-965 | 43-965 |
| 43B | Worm Bushing Screw | 43B-965 | 43B-965 |
| 44 | L.S. Worm Shaft Bushing | 44-965 | 44-965 |
| 46 | Line Guide | 46-965 | 46-976 |
| 47 | Pawl | 47-965 | 47-320 |
| 48 | Pawl Cover Screw | 48-965 | 48-965 |
| 50 | Worm Shield | 50-965 | 50-965 |
| 50A | R.S. Plate Screw (2 req.) | 50-716 | 50-716 |
| 55 | Ball Bearing | 55-113H | 55-113H |
| 55A | Gear Stud Bushing | 55A-965 | 55A-965 |
| 58 | Line Guide Post | 58-965 | 58-965 |
| 61 | Brake Drum | 61-965 | 61-965 |
| 61A | Brake Drum Screw (2 req.) | 43B-965 | 43B-965 |
| 62A | Click Spring (2 req.) | 62A-965 | 62A-965 |
| 64 | Idler Gear | 64M-965 | 64M-965 |
| 65 | Idler Gear Pin | 65-965 | 65-965 |
| 65W | Idler Gear Washer | 65W-965 | 65W-965 |
| 66 | Spool Gear Click Ratchet | 66M-965 | 66M-965 |
| 67 | Lock Flng | 67-168 | 67-168 |
| 68 | Shift Arm | 68-965 | 68-965 |
| 68B | Shift Arm Screw | 68B-965 | 68B-965 |
| 69 | Retaining Flng | 69B-50 | 69B-50 |
| 69B | Retaining Flng (2 req.) | 69B-900 | 69B-900 |
| 98 | Trip Ratchet | 98-965 | 98-965 |
| 98B | Roller Bearing | 98B-965 | 98B-965 |
| 98S | Bearing Clutch Shaft | 98S-965 | 98S-965 |
| 110A | Handle Nut Cap | 110A-555 | 110A-555 |
| 134 | Gear Stud | 134-965 | 134-965 |
| 159 | Shift Arm Spring | 159-965 | 159-965 |
| 173 | L.S. Bearing Retainer | 173-965 | 173-965 |
| 176 | Anti-Backlash Brakes (4 req.) | 176-965 | 176-965 |
| 177 | Brake Selection Knob | 177-965 | 177-965 |

| KEY NO. | DESCRIPTION | MODEL 955 PART NO. | MODEL 965 PART NO. |
|---------|-------------------------------|--------------------|--------------------|
| 1 | Right Side Plate | 1N-965 | 1N-965 |
| 3 | Inner R.S. Plate | 3-965 | 3-965 |
| 4 | Fibre Washer | 4-60 | 4-60 |
| 5 | Main Gear | 5-965 | 4-60 |
| 6 | Drag Washer HT-100 (Set of 3) | 6C-965 | 6C-965 |
| 7 | Metal Drag Washer (Set of 3) | 7C-965 | 7C-965 |
| 8 | Star Tension Washer | 8-965 | 8-965 |